

LOGLINER



KM★

ICE3 (hull)

ICE2 (machinery)

AUT1

Fishing vessel

LOGLINER is a series of vessels of various sizes, designed for maximum fishing efficiency. The design based on the well-established and proven **Enduro™** Bow concept for the best seaworthiness in rough seas. This bow shape also allows full use of the vessel for the benefit of the crew and the maximum capacity of the fish hold and the vessel as a whole.

BASIC INFORMATION:

- overall length 63.00 m
- width 14.00 m
- number of crew 39 people
- draft 5.962 m
- vessel speed 14 knots

METHOD OF FISHING:

- longlining

FISH SPECIES:

- cod
- pollock
- grenadier
- Kamchatka flounder
- Greenland halibut
- Arrowtooth halibut
- Pacific halibut
- coal fish
- red fish
- and other types of fish

LOGLINER is equipped with a fish processing factory with automatic packaging and palletizing. Transporting pallets to all levels from the hold to unloading through the elevator trunk ensures fast system operation.

PRODUCTION CAPACITY:

- total processing capacity on the ship ~ 50t / day
- freezing capacity ~ 50t / day

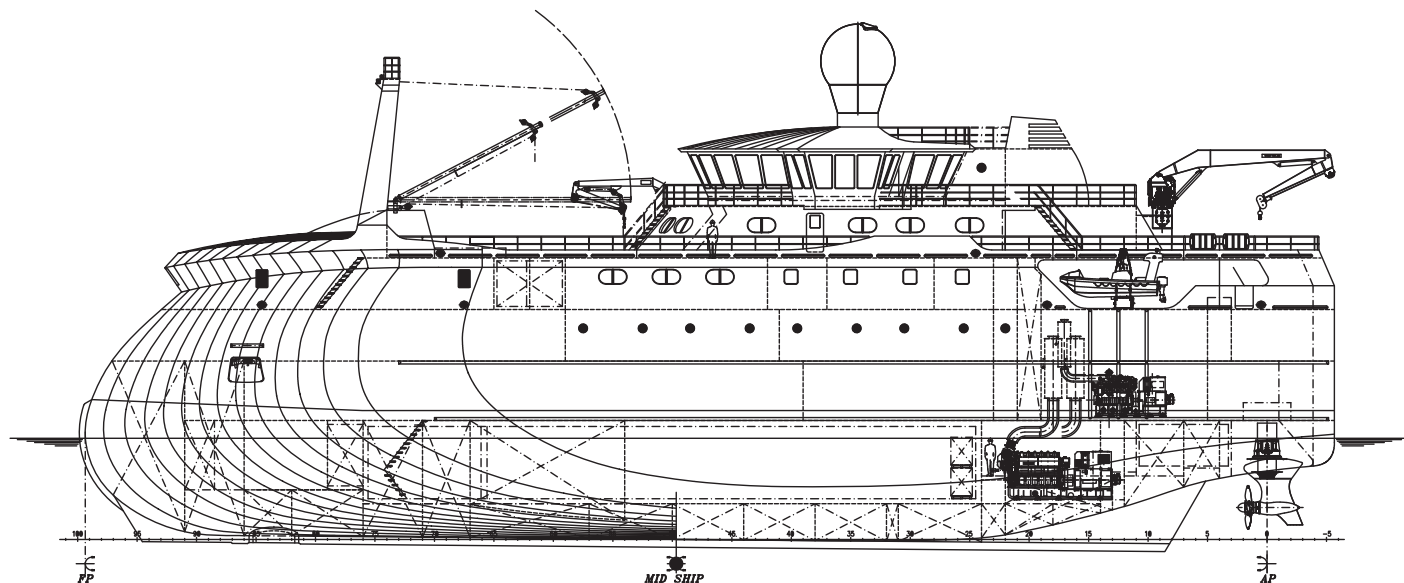
HOLD CAPACITY:

- main fish hold ~ 1150 m³

METHODS AND TYPES OF PROCESSING:

- frozen blocks of cod fillets
- boneless fillets (with / without skin), fillets with bones (with/without skin), portioned fillets and cuts
- cod h/g frozen in blocks
- halibut frozen whole in shock freezer
- halibut h/g 2kg shock freezing
- small (less than 2kg) halibut h/g in frozen blocks
- canned liver
- offal (heads, minced meat) in frozen blocks

LONGLINER



ICE3 (hull)

ICE2 (machinery)

AUT1

Fishing vessel

LONGLINER is a series of vessels of various sizes, designed for maximum fishing efficiency. The design based on the well-established and proven Enduro™ Bow concept for the best seaworthiness in rough seas. This bow shape also allows full use of the vessel for the benefit of the crew and the maximum capacity of the fish hold and the vessel as a whole.

BASIC INFORMATION:

- overall length 63.00 m
- width 14.00 m
- number of crew 39 people
- draft 5.962 m
- vessel speed 14 knots

FISH SPECIES:

- cod
- pollock
- grenadier
- Kamchatka flounder
- Greenland halibut
- Arrowtooth halibut
- Pacific halibut
- coal fish
- red fish
- and other types of fish

METHOD OF FISHING:

- longlining

LONGLINER is equipped with a fish processing factory with automatic packaging and palletizing. Transporting pallets to all levels from the hold to unloading through the elevator trunk ensures fast system operation.

PRODUCTION CAPACITY:

- total processing capacity on the ship ~ 50t / day
- freezing capacity ~ 50t / day

HOLD CAPACITY:

- main fish hold ~ 1150 m³

METHODS AND TYPES OF PROCESSING:

- frozen blocks of cod fillets
- boneless fillets (with / without skin), fillets with bones (with/without skin), portioned fillets and cuts
- cod h/g frozen in blocks
- halibut frozen whole in shock freezer
- halibut h/g 2kg shock freezing
- small (less than 2kg) halibut h/g in frozen blocks
- canned liver
- offal (heads, minced meat) in frozen blocks