

CRAB HARVESTER 60M



KM ★

ICE2

AUT1

OMBO

Fishing Vessel

CRAB HARVESTER 60M is a fishing vessel intended for harvesting all species of crab with the use of multiple conical traps fitted on a line. The vessel is a closed concept vessel, arranged for retrieving crab pots conventionally from side of the vessel through a large hydraulic operated side opening on SB side of the vessel.

The hull is designed with the Endurobow™ bulbous bow shape providing various behavioural benefits from the design, including increased comfort for a crew. The processing deck is a completely open space with no support pillars.

BASIC INFORMATION:

- overall length 59.63 m
- width 14.00 m
- number of crew 32 people
- max draft 6,50 m
- vessel speed 14 knots

METHOD OF FISHING:

- The vessel is outfitted for crab harvesting with conical traps

HOLD CAPACITY:

- fish hold ~ 650 m³ (approx. 200 tons of frozen product)

METHODS AND TYPES OF PROCESSING:

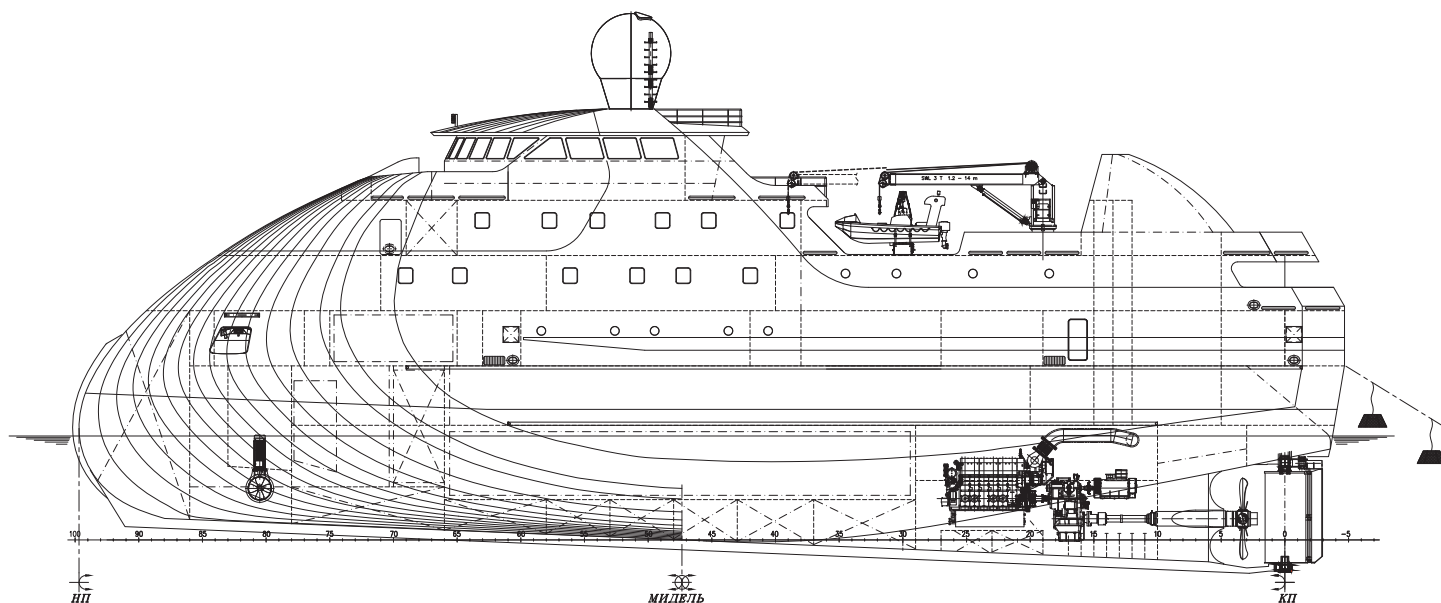
- Processing of harvested crab by air freezing into cooked-frozen and raw-frozen products of various types with a production capacity for ready products of 10-15 tons per day.

FISH SPECIES:

- different species of crab

Crab processing area with an area of 360m² for the full processing, including frozen/boiled crab products in consumer packaging.

CRAB HARVESTER 60M



KM ★

ICE2

AUT1

OMBO

Fishing Vessel

CRAB HARVESTER 60M is a fishing vessel intended for harvesting all species of crab with the use of multiple conical traps fitted on a line. The vessel is a closed concept vessel, arranged for retrieving crab pots conventionally from side of the vessel through a large hydraulic operated side opening on SB side of the vessel.

The hull is designed with the Endurobow™ bulbous bow shape providing various behavioural benefits from the design, including increased comfort for a crew. The processing deck is a completely open space with no support pillars.

BASIC INFORMATION:

- overall length 59.63 m
- width 14.00 m
- number of crew 32 people
- max draft 6,50 m
- vessel speed 14 knots

FISH SPECIES:

- different species of crab

Crab processing area with an area of 360m² for the full processing, including frozen/boiled crab products in consumer packaging.

METHOD OF FISHING:

- The vessel is outfitted for crab harvesting with conical traps

HOLD CAPACITY:

- fish hold ~ 650 m³ (approx. 200 tons of frozen product)

METHODS AND TYPES OF PROCESSING:

- Processing of harvested crab by air freezing into cooked-frozen and raw-frozen products of various types with a production capacity for ready products of 10-15 tons per day.